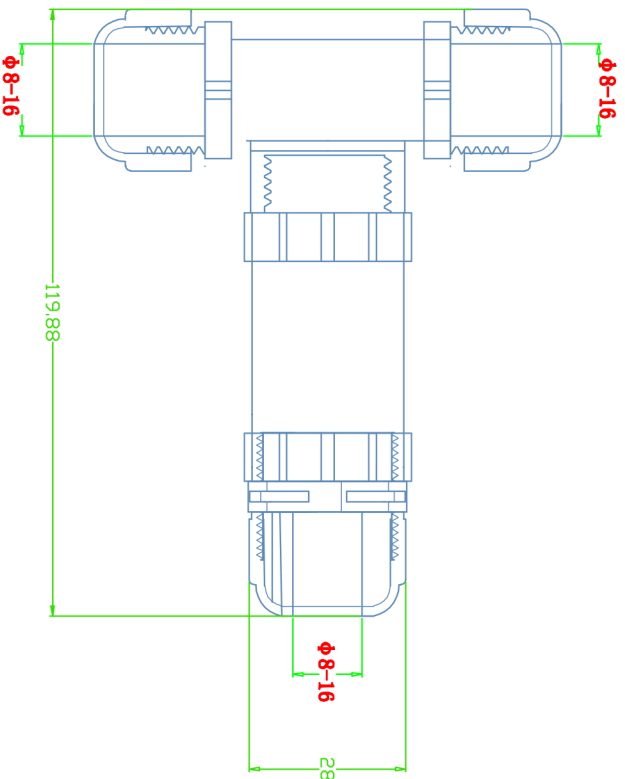
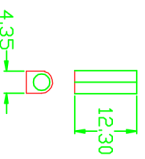
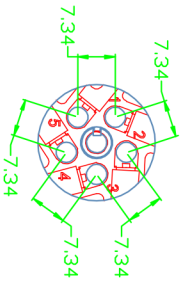
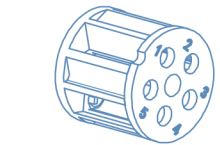


REV.	EON. NO.	REV./No	REVSER	APPD.
F21	DRAWING			

适用 $\phi 8-16$ 线缆



- 技术要求:
1. 电流: $\leq 24A$
 2. 电压: AC250V
 3. 防水等级: IP68
 4. 工作温度: $-20^{\circ}C \sim +85^{\circ}C$
 5. 适用线径: 0.5-4mm
 6. 适用电缆外径: 8-16mm
 7. 接线方式: 螺丝锁接



			TYPE NO.	T2-5	TITLE	ASSEMBLY
			型号:		名称:	
>120	± 0.50		图号:		数量:	
>30~120	± 0.30		APPD.		DWG. NO.:	KNT-TL-20
>6~30	± 0.20		审核:		图号:	
0~6	± 0.10	ANGLE	DR.		UNIT:	mm
		$\pm 1^{\circ}$	设计:		SCALE:	FULL
					比例:	1/1
					UNIT:	mm
					REV.:	F20
					图号:	