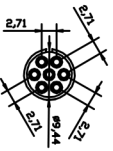
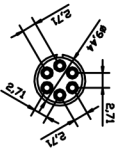
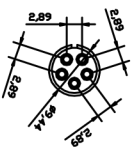
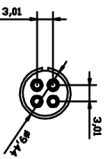
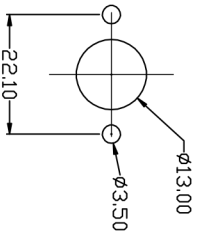
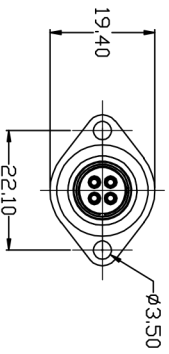
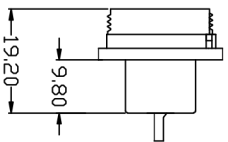
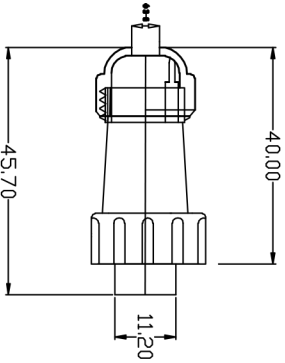
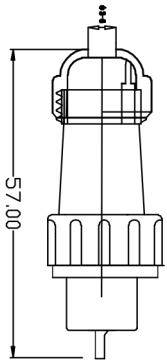


REV. 6	ECON. NO. 11	REV. No 11	REVSER 111	APPD. 11
F21	DRAWING			



### 适用 $\phi 3-6$ 线缆

#### 技术要求:

1. 引脚应排列整齐, 要求无偏位现象。
2. 外观应无明显缺陷, 如: 熔接痕、缩孔、颜色不一致等。
3. 可焊性应符合要求
4. 线规直径:  $\leq 0.785\text{mm}/18\text{mm}$
5. 接触电阻:  $5\text{m}\Omega$
6. 工作电压: 200V
7. 接线方式: 焊接
8. 电流: 5A
9. 接触直径:  $\phi 1/4/5/6/7$

TYPE NO.		TITLE	
型号: SP13R法兰 4-7芯		名称: ASSEMBLY 装配图	
>120	$\pm 0.50$	DWG. NO.:	KNT-TL-20
>30~120	$\pm 0.30$	图号:	1/1
>8~30	$\pm 0.20$	SCALE:	FULL
0~6	$\pm 0.10$	比例:	1/1
ANGLE $\pm 1'$		UNIT:	mm [Decimal]
DR. 设计:		REV.:	F20
APPD.:		次数:	
CHKD.:			
DR.:			