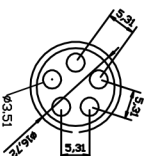
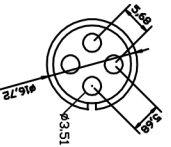
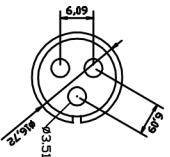
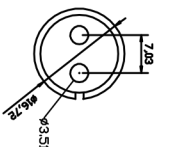
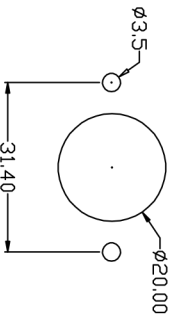
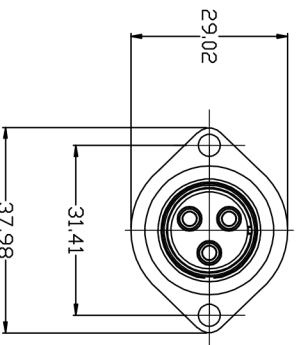
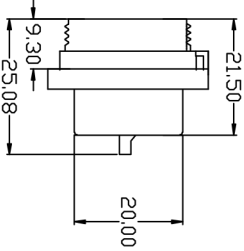
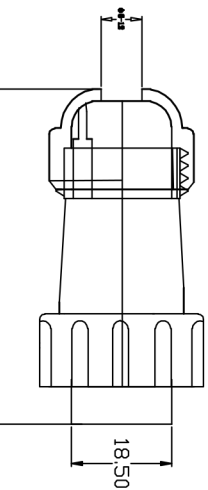
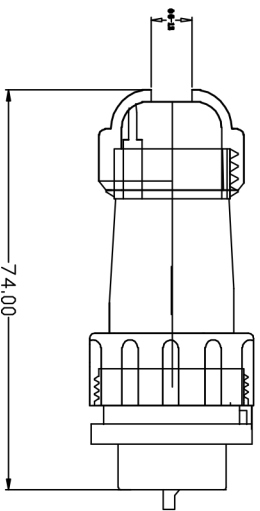


REV. 6	ECON. NO. 11	REV. No 11	REVSER 111	APPD. 11
F21	DRAWING			

适用 $\phi 6-12$ 线缆



- 技术要求:
1. 引脚应排列整齐, 要求无偏位现象。
 2. 外观应无明显缺陷, 如: 熔接痕、缩孔、颜色不一致等。
 3. 螺钉应能自由上紧和松开, 不能有卡死及退出现象。
 4. 可焊性应符合要求
 5. 线规直径: $\leq 4.17\text{mm}/11\text{mm}$
 6. 接触电阻: $1\text{m}\Omega$
 7. 工作电压: 500V
 8. 接线方式: 焊接/螺丝压接
 9. 电流: 30A
 10. 接触直径: $\phi 3*2/3/4/5$

TYPE NO.	SP20R法兰 2-5芯	TITLE	ASSEMBLY
APPD.		规格:	
DR.		图号:	KNT-FL-20
SCALE	FULL	比例:	1/1
UNIT	mm [inch]	单位:	mm [inch]
REV.	F20	版本:	F20